

ELECTRIC DUAL FLAT SCREEN MULTIFUNCTION DESK

LINE-OF-SIGHT DESIGN SERIES



Work : Learn : Inspire

Design: Mark Müller

LINE-OF-SIGHT DESIGN SERIES

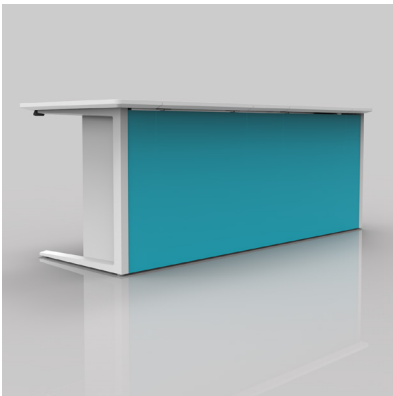
ELECTRIC DUAL FLAT SCREEN MULTIFUNCTION DESK

Computer furniture that reflects the form and function of the next generation of technology. Within a stunning housing sits the ability to increase room utilization by converting instantly from lecture to computer-based learning.



FINISHES AND DESIGN

- Uses innovative materials including cast aluminum leg at the end of each run
- Available in a wide range of sizes and finishes including laminate and wood veneer
- Designers are free to add unlimited accents through acrylic or laminate panels
- Designed by Mark Müller, celebrated product innovator with over 25 years of design experience and 30 international awards



BENEFITS

- Enhances the quality of education or corporate training with improved sight-lines for students and instructor
- Flat screen stores away instantly to create multi-function spaces and to enhance security
- Designed to accommodate any flat screen, including All-in-One PCs, iMacs and dual monitors
- Rear modesty panel is fully removable with hidden magnets



SPECIFICATIONS

- Wireless Remote Control operates all flat screens at once
- Up/down switches for each user allow individual screen adjustment
- Compatible with automated control systems such as AMX, Crestron, Extron
- Certifications: UL, ANSI/BIFMA
- LEED: MR 4.2, ID 1.1 - 1.4 eligible
- Warranty: 10 years (electrical 3 years)