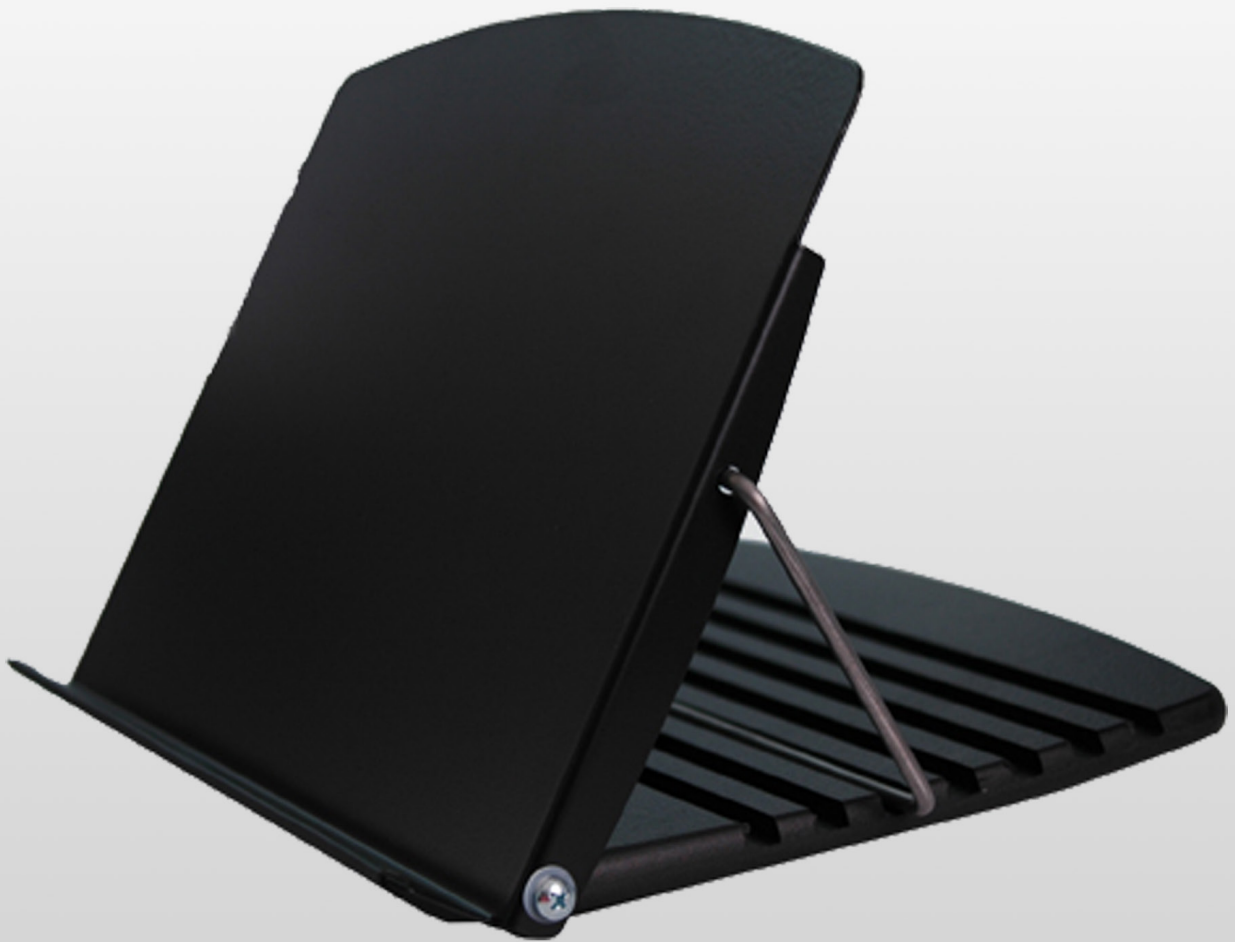


ERGONOMIC ACCESSORIES

COPY HOLDER



Copy holders are a useful addition to the ergonomic office, allowing papers to sit at the correct angle for data entry and creating extra worksurface space.

ERGONOMIC ACCESSORIES

COPY HOLDER



FEATURES

- Height adjustable with 5-3/8" range
- Angle adjustable with 30-degree range
- Rigid 1" lip provides support for documents, binders or manuals
- Premium line guide included which slides over copy
- Steel and phenolic finish
- Also available in melamine